

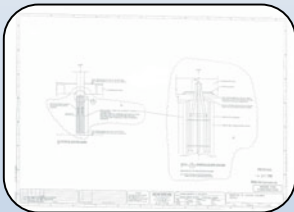
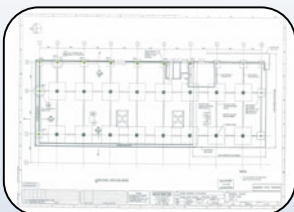
Project Brief

Rankine Brown Building

Structural Upgrade



Wellington, NZ
2003



The existing secondary columns on the perimeter of level 0 and 1 required strengthening and the installation of a revised pinned connection detail at the top and bottom of the columns. The columns were saw cut to reveal the steel Tentor Bars which were wrapped with 2 x layers of polythene tape (bond breaker) and 5 x layers of Tyfo® SCH 35 carbon composite.

The columns were wrapped full height with 3 x continuous layers of Tyfo® SEH 51 glass composite with a 150mm of finish edge from start edge. The wrap was specified to start/finish symmetrically about the centerline of the column face.