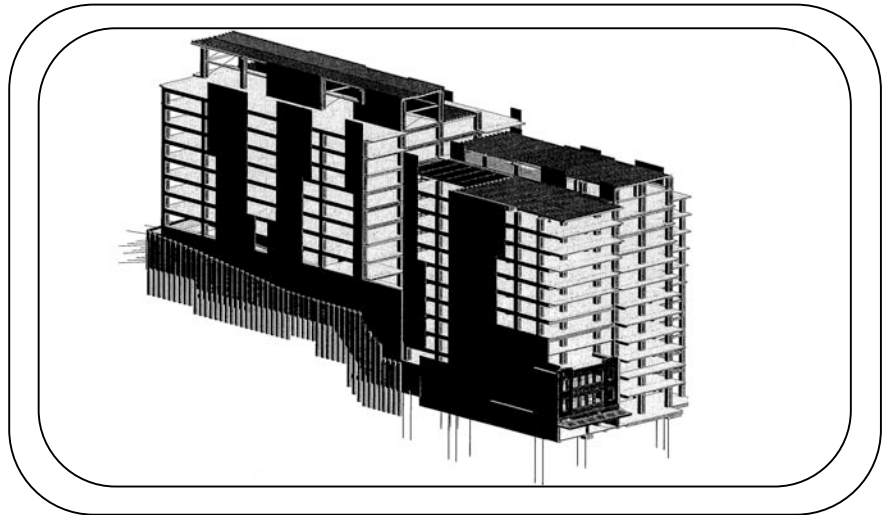


Project Brief

Willis Street Central Column Strengthening



Wellington, NZ
2009



The existing historic building was integrated into the design of a new high-rise. 20 of the existing level 1 columns required strengthening for shear and ductility. 4 different column load types were identified and the most economic Tyfo® Fibrwrap® solution installed.

A combination of Tyfo SEH 51A glass fabric and Tyfo SCH 41 carbon fabric was installed to the entire clear height of the columns. Some columns were wrapped with 7 layers of SEH 51A to provide the required shear capacity and minimum ductility μ 4.5

The square column corners were radiused to 20mm. After the fabric installation Concrete Solutions completed a final scratch coat to provide a bond surface for the columns to be plastered to the required finish.