

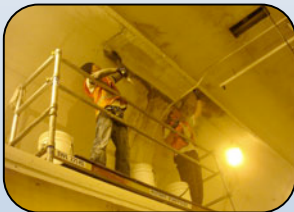
Project Brief

Mt Victoria Car Tunnel

Strengthening



Wellington, NZ
2008



Tyfo® Web was used as a very rapid repair to areas of badly spalling concrete. The imminent risk to the public of spalling concrete falling from above vehicle and pedestrian ways was quickly mitigated. The temporary repair was painted to match the existing tunnel colour scheme.

The problem areas identified at that time were repaired during a scheduled four night tunnel closure.