

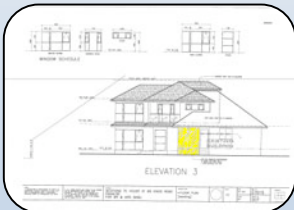
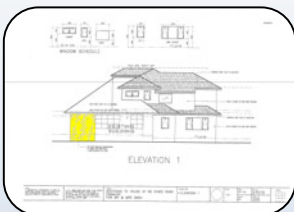
Project Brief

# 96 Kings Road

## Un-Reinforced Masonry Strengthening



Auckland, NZ  
2009



Alterations and additions including the addition of a second level to this 1940s un-reinforced brick building necessitated some light shear strengthening of the existing structure.

The brick surface was prepared with a light grind, the pointing lines were filled and Tyfo® SEH 51A was installed to a combination of both interior and exterior surfaces. Tyfo® SEH Composite Anchors were installed around openings.

The applicator then plastered over the Fibrwrap to attain a high level of finish matching the surrounding areas of the building.