

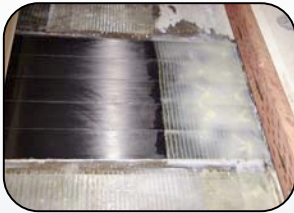
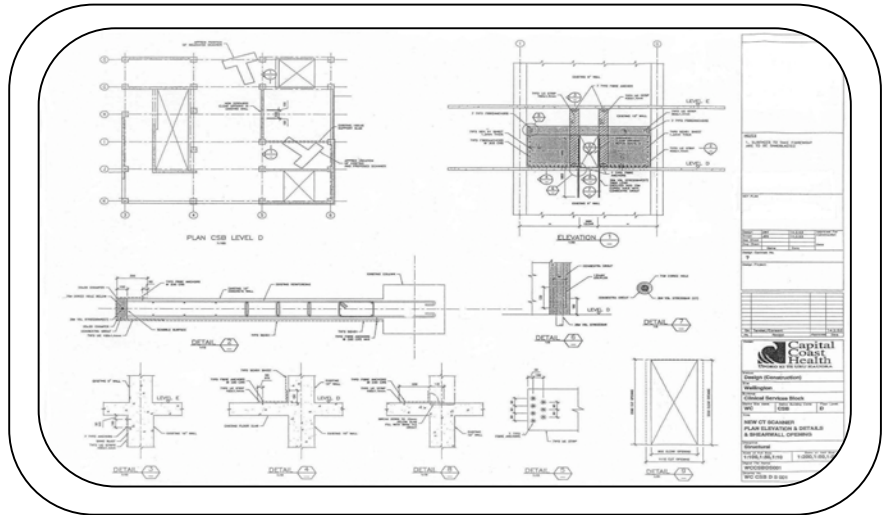
Project Brief

Wellington Hospital CT Scanner

Shear wall Opening



Wellington, NZ
2003



Capital Coast Health installed a new CT Scanner in the Clinical Services Building. The design for this facility required a new opening to be formed in the existing shear wall.

The shear wall required significant strengthening around the new opening and the solution was designed incorporating several complimentary systems. On each side of the new opening, a 38mm stress bar was installed from the underside of the new lintel and cored down through the floor (1800mm) into the wall below. The stressbar was then grouted into the existing wall and new wall ends formed to encapsulate the stressbar at the sides of the new opening. The opening was then strengthened with a combination of Tyfo® 4UC75 Composite Laminate Strips and Tyfo® SEH 51A Fibrwrap installed as a U wrap as confinement for the stress bar detail and for shear strength to the wall areas either sides of the opening. Tyfo® SEH Composite Anchors were installed at the ends on the UC Strip and the perimeter of the Fibrwrap.

